

Alesta® SD

SuperDurable powder coatings for metal substrates





Alesta® SD is the perfect powder coating solution for metallic substrates in architecture and high-end, outdoor industrial design.

It has been specially developed for all types of aluminium and steel architectural components, such as window frames, façades, cladding and doors. It is also intended for urban furniture, garden furniture, lighting and many more applications where maximum gloss retention and colour fastness are very important. Alesta® SD is a range of products based on a super durable polyester resin system, incorporating higher grade pigments and stabilizers with outstanding exterior durability.

Alesta® SD

Proven durability for an
outstanding performance

Architects design prestigious buildings which have to last for many years and harmonise with the surrounding areas. They look for reliable materials with outstanding properties and a respect for the environment.

Alesta® SD is part of the premium range which is formulated in architectural polyester quality designed to surpass the most severe specifications. All products have an assured quality specified by the Qualicoat Class 2 and GSB Florida 3 quality labels and meet the AAMA 2604 requirements, ensuring the highest level of protection.



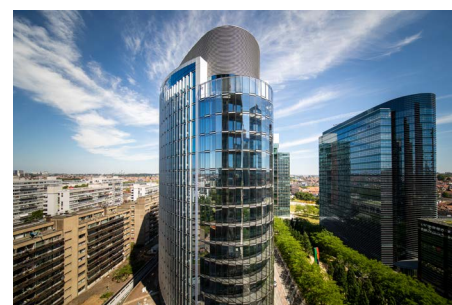
Architects design prestigious buildings, look for reliable materials with outstanding properties that add ecological durability to a project that's meant to last for generations.

Target applications

- Aluminium curtain walls for prestigious buildings
- Doors, window frames, cladding and other parts in architecture and construction
- Buildings in severe environments
- Urban furniture, shopping fittings, garden furniture, lighting and any other industrial applications where resistance to atmospheric aggression is essential.

Highlights & benefits

- Excellent outdoor weathering resistance, adapted to severe environments
- Very good mar resistance
- Optimized and homogeneous baking conditions for all finishes resulting in an overall energy saving.
- Qualicoat Class 2, GSB Florida 3 and AAMA2604
- Available in a wide selection of colours, effects and gloss levels
- Special interest for large projects, exposed systems like gate, veranda, pergola & also high-end outdoor furniture & lighting
- Longer life cycle (aesthetic) & sustainable choice
- Able to increase quality of aluminium systems with a limited extra cost versus benefits
- Up to 25 years of warranty (under conditions)
- Lower maintenance costs



* Our Alestas® SD is supported by warranty, The warranties are valid when the product is applied by an Axalta approved applicator and under the Axalta prescribed conditions. In order to determine the years of warranty the project to be coated needs to be evaluated before starting it. The warranty will be signed with the approved applicator.

9 critical RAL-based colours are excluded by the QUALICOAT organization. In addition, Axalta does not offer certain critical RAL-based colours, these colours might become available over time thanks to intensive work in our R&D department.

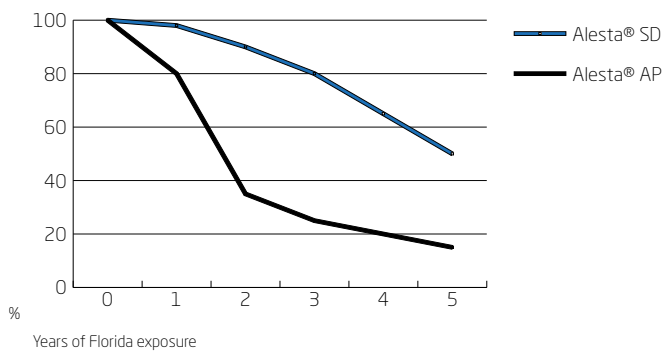
Visit www.axalta.com/superdurable for an updated list on these excluded colours and other information on this product range.



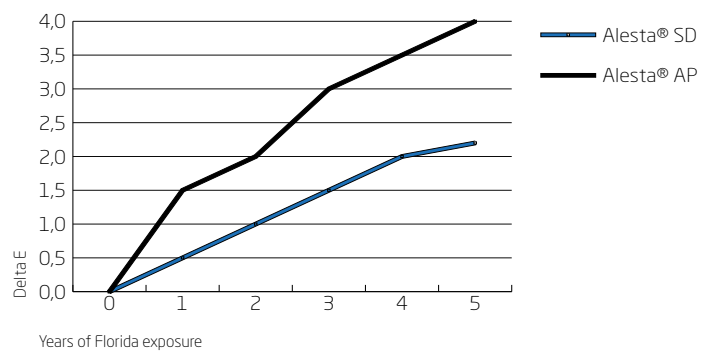
Alesta® SD products can be formulated in a wide range of appearances that vary in colour, gloss, texture and metallic effect.

Standard Alesta® AP versus super-durable Alesta® SD

Florida exposure - gloss retention



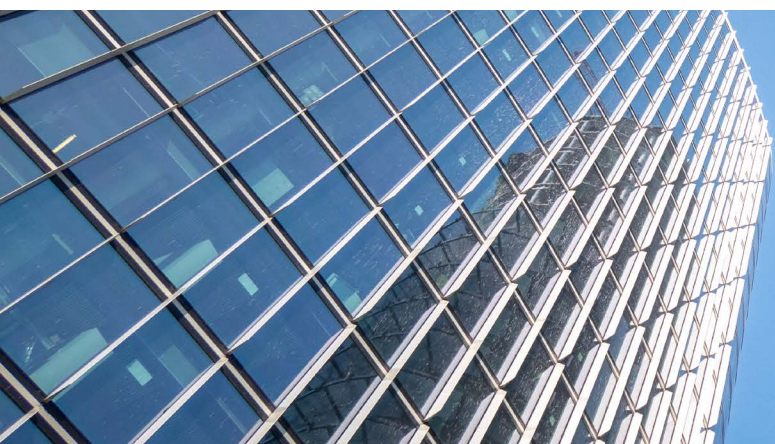
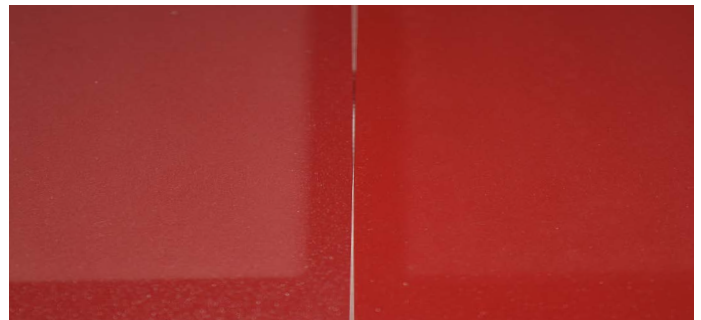
Florida exposure - colour deviation



Gloss retention - Accelerated weathering QUVB 600h - Alesta® AP left/ Alesta® SD right



Colour deviation - Accelerated weathering QUVB 600h - Alesta® AP left/ Alesta® SD right





The Alesta® SD product range significantly minimizes scratches during handling, transportation and assembly of coated pieces.

Alesta® SD protects profiles and coated parts during handling, transport and assembly. By default our range is more resistant to scratches compared to other super durable powder coatings in the market. The all-in-one products provide your projects with a premium quality with premium properties.

Our premium technology allows you to reduce rejected pieces during production and minimizes touch-up requirements on site.

**Martindale:
Mar resistance test**

The Martindale test is used to measure the mar resistance of a coated surface. Also known as the rub test, Martindale tests are undertaken to test the scratch and mar resistance and to meet QUALICOAT specifications.

According to this test, the gloss retention shall be at least 30% for smooth finishes and at least 60% for textured finishes in a super durable class 2 powder coating.

All Alesta® SD products exceed these specifications. The smooth finishes retaining on average over 60% of gloss and the textured finishes even retaining more than 75% on average.

	QUALICOAT specification Gloss retention %	Alesta® SD test result average Gloss retention %
Alesta® SD Matt	Minimum 30%	>60%
Alesta® SD Semi-Gloss	Minimum 30%	>60%
Alesta® SD Fine Textured	Minimum 60%	>75%



Alesta® SD products offer very good mar resistance and developed in premium quality and with premium properties.

Martindale test results



Sensitive dark, glossy finish 80GU
after Martindale test



Alesta® SD Matt finish 30GU
after Martindale test

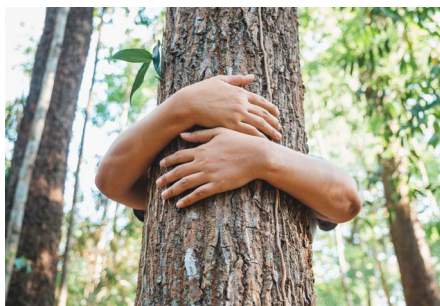


Alesta® SD Fine textured finish 5GU
after Martindale test



Developing and manufacturing high performance coatings in a responsible manner

Sustainability at Axalta



Powder coating is the most sustainable paint solution that the 21st century has to offer. No use of water, the air is the carrier of the powder paint to the metallic substrate through electrostatic guns. They can be easily and ecologically applied to achieve uniform and durable finishes.

Sustainability

Sustainability is central to Axalta's business. From the coating of articles with our products to make them last longer, to reducing the environmental footprint of our operations, to working safely and with the highest level of ethics and integrity in everything we do, Axalta is committed to strong environmental, social, and governance

practices. To learn more about Axalta's sustainability initiatives, goals, and performance, please see our latest Sustainability Report at sustainability.axalta.com

Powder coatings are environmentally responsible compared to solvent-borne coatings since powder coatings contain no solvents and release negligible amounts of VOCs into the atmosphere. Cured coatings are not expected to release significant quantities of VOC in their service life and cured powder coatings have negligible impact on indoor air quality.

Powder coatings may contribute towards LEED (Leadership in Energy and Environmental Design) credits.

At present Alesta® SD Architectural products, which are placed on the market within the European Economic Area, do not contain any Substances of Very High Concern (SVHC) which are included in the 'Candidate List', available on the ECHA (European Chemical Agency) webpage, in an individual concentration of 0.1 weight % or more. At present Alesta® SD Architectural

products do not carry any environmental hazard or health hazard pictograms. The powder coating materials, which are placed on the market within the European Economic Area (EEA), do not contain Lead (Pb), Hexavalent Chromium (CrVI), Cadmium (Cd) or Mercury (Hg) as intentionally added compounds. Nevertheless, these substances could occur as trace impurities in raw materials which are used in the manufacture of the products. The waste from powder coating is significantly less hazardous than waste from solvent-borne coatings.



Environment

- Responsible operation of our plants and sites
- Reduction of emissions, energy, water, and waste from operations
- Enable reduction of energy, emissions and waste for our customers
- Technology that makes materials last longer, facilitates use of novel substrates, and reduces the impact of coatings on the environment

Governance

- Corporate governance and ethical leadership
- Compliance with laws, including antibribery laws and accurate financial reporting
- Information governance/cybersecurity
- Industry relations/association memberships

Social

- Safe working conditions at Axalta sites
- Supply chain sustainability
- Efforts to increase workplace and supplier diversity
- Employee/candidate understanding of sustainability efforts
- STEM education and environmental stewardship programs in our communities



Sustainability & Alestia® SuperDurable

Our sustainable powder coatings contribute to a better world

Alestia® SD keeps coated surfaces looking good for longer resulting in a longer life expectancy.

It is a range of products based on a super durable polyester resin system, incorporating higher grade pigments and stabilizers with outstanding exterior durability.

Environmental aspects

- Powder coatings are environmentally responsible compared to solvent-borne coatings since powder coatings contain no solvents and release

negligible amounts of VOCs into the atmosphere.

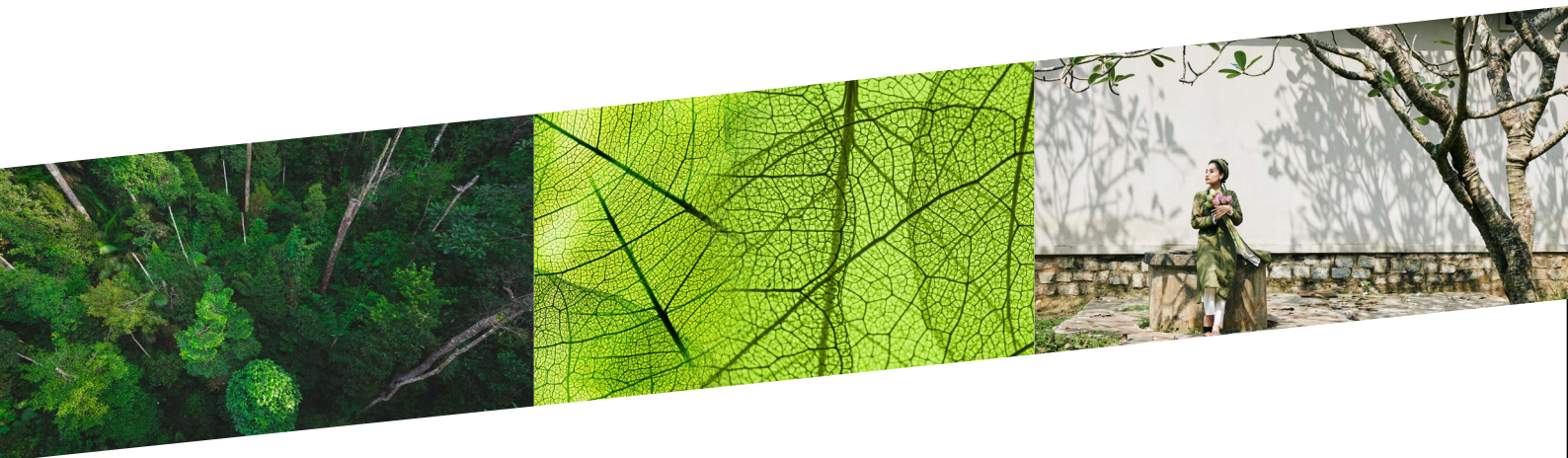
- Cured coatings are not expected to release significant quantities of VOC in their service life and cured powder coatings have negligible impact on indoor air quality.

Health aspects

- Representative samples of Alestia® SD products have been tested with respect to VOC emission at room temperature by an independent laboratory according to the standard ISO 16000-10:2006. The results show that the VOC is far below the

detection limit. Report available upon request.

- The powder coating materials, which are placed on the market within the European Economic Area (EEA), do not contain Lead (Pb), Hexavalent Chromium (CrVI), Cadmium (Cd) or Mercury (Hg) as intentionally added compounds. Nevertheless, these substances could occur as trace impurities in raw materials which are used in the manufacture of the products.



Certification

- Environmental Product Declaration available
- Powder coatings may contribute towards LEED (Leadership in Energy and Environmental Design) credits.

Visit www.axalta.com/superdurable for the certifications and all other information on this product range.

Alesta[®]

Powder Coatings



For questions please contact
your local sales office.



WWW.POWDER.AXALTA.COM

Make a colour selection for your next project now!

www.axaltacolourit.com

